

Heading West - Extra!

Wires go up on the Western!



Too late for the main newsletter this week, but I had to share this news.

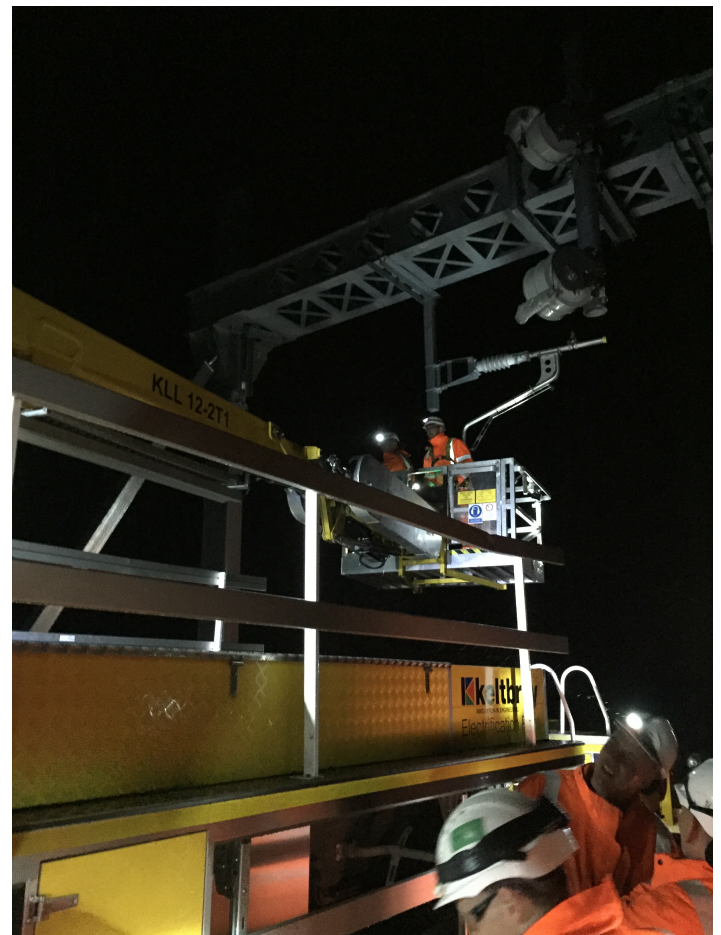


What you're looking at here is the first stretch of new overhead line being installed on the Western Route.

I'm sure I don't need to tell you what a significant milestone this is. It's the first time the new Series 1 has been used anywhere on the network.

1600m of earth wire was fitted between Tilehurst and Pangbourne, as part of the section which will be used for testing the new trains.

That's nearly a mile of wiring in the space of one night, and this is very much the shape of things to come.



This is fantastic news, and my thanks and congratulations go to everyone involved. Here's to the rest of the lines going up!

Mark